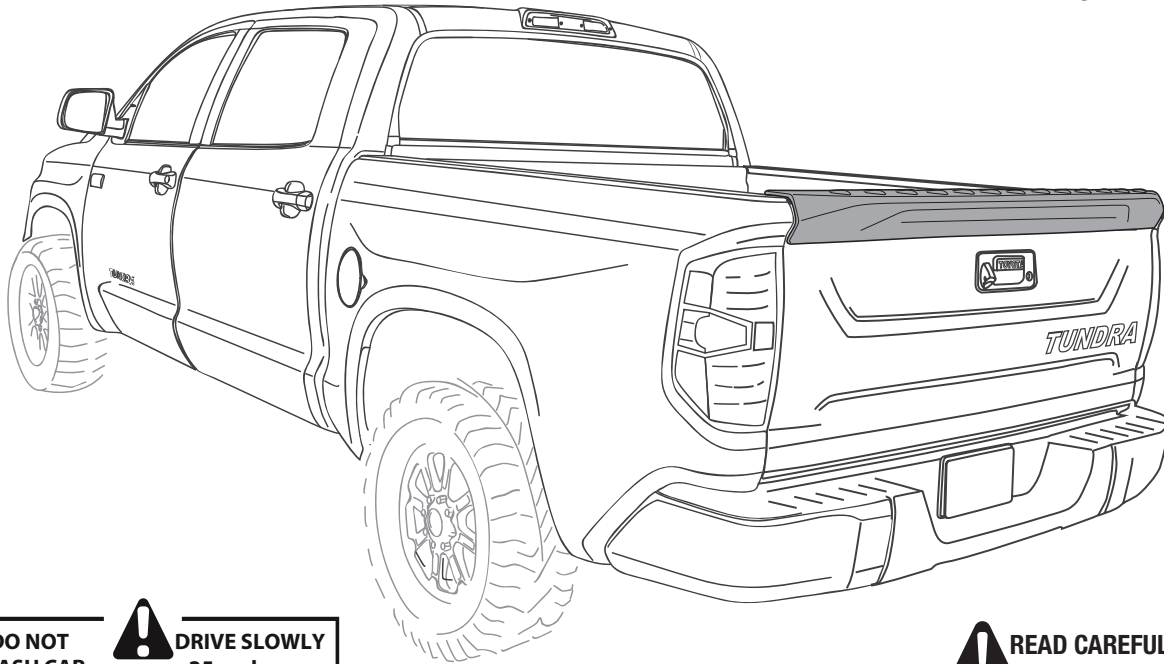


## INSTALLATION MANUAL

### TAILGATE SPOILER TUNDRA 2015

PART # : 1102DNTUTO01A15



**DO NOT WASH CAR**

**DRIVE SLOWLY 25 mph max**

**24 hrs**

**READ CAREFULLY BEFORE INSTALLATION**




We recommend 2 persons for installation

### TOOLS

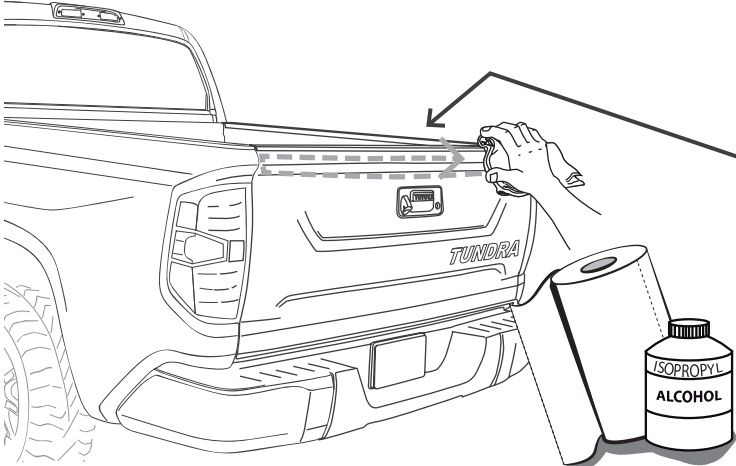


### CHECK LIST

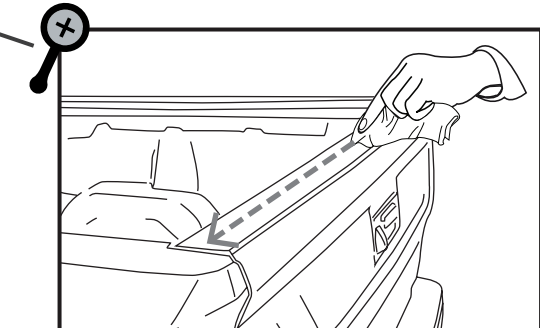
\*Already installed in the part

ITEM	DESCRIPTION	DRAWING	AMOUNT
<b>A</b>	* VHB TAPE		Included in the parts
<b>B</b>	GREASE PENCIL		1 pc
<b>C</b>	ADHESION PROMOTER		1 pc

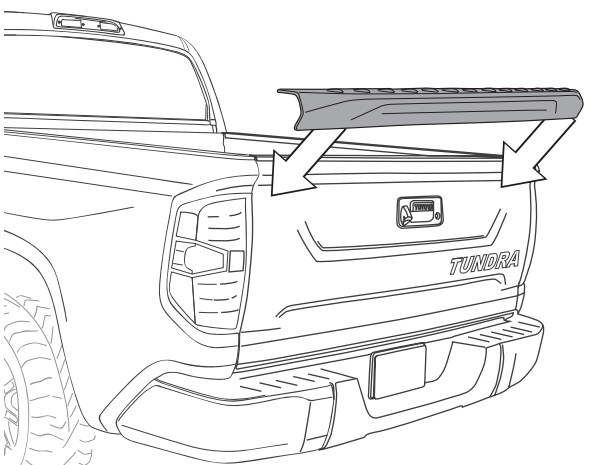
**1 CLEAN**  **WASH WITH WATER, DETERGENT AND SOFT CLOTH OR SPONGE**



**IMPORTANT**  
ENSURE THE SURFACES ARE COMPLETELY CLEAN BEFORE INSTALLING

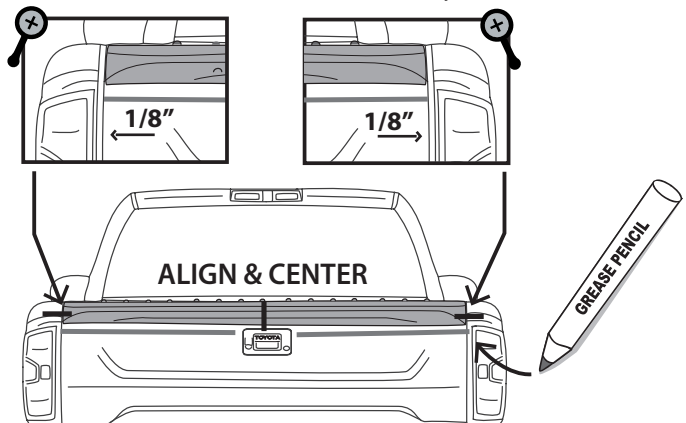


**2 PRE-MOUNT**



**3 MARK**

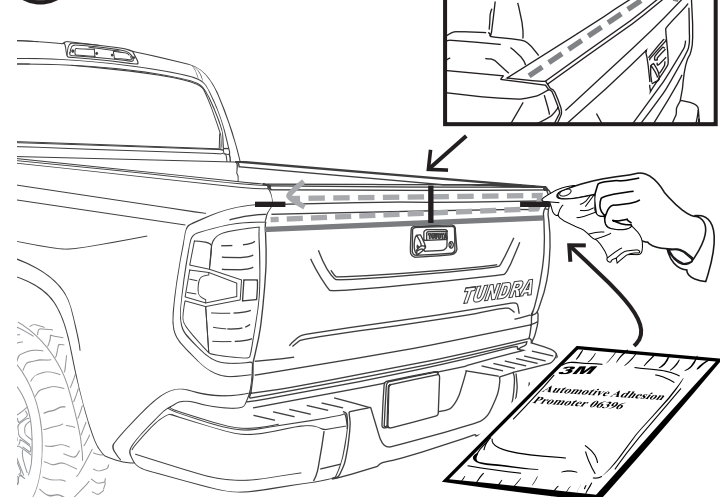
LEAVE APPROXIMATELY 1/8" FROM THE EDGE, ON BOTH SIDES




 **HASH MARKS**

**DRAW CENTER HASH MARK WITH GREASE PENCIL ON SPOILER AND SHEET METAL, THIS WILL ENSURE SPOILER WILL BE CENTERED TO GREASE PENCIL OUTLINE.**

**4 ADHESION PROMOTER** 

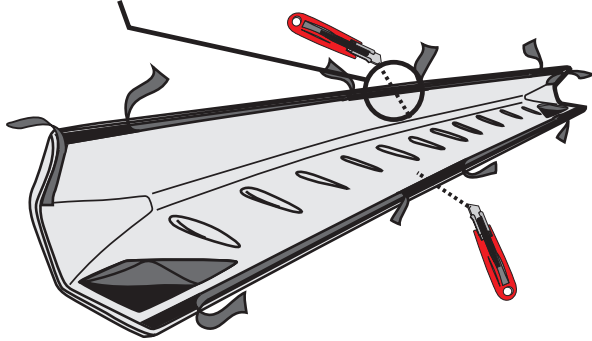
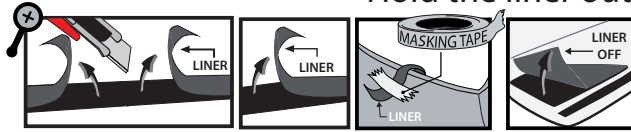


 **FIRST CLEAN ALL OVER THE APPLICATION AREA WITH ACETONE**

 **A full surface contact between tape and substrate is decisive for good adhesion performance. Contact is achieved by applying pressure. In practice a pressure between 40 and 50 N/cm<sup>2</sup> is usually needed and an application temperature between 25 and 45 °C or 77 and 113 °F is also necessary. During application, add-on parts and tapes must have the similar temperature.**

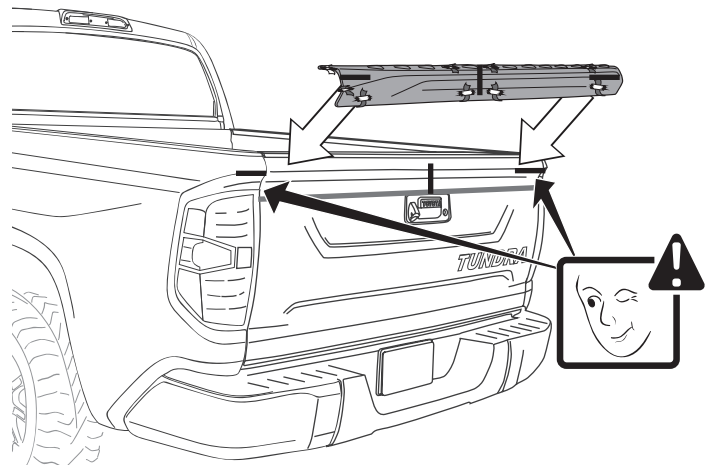
### 5 PEEL

**PEEL OFF**  
Hold the liner out

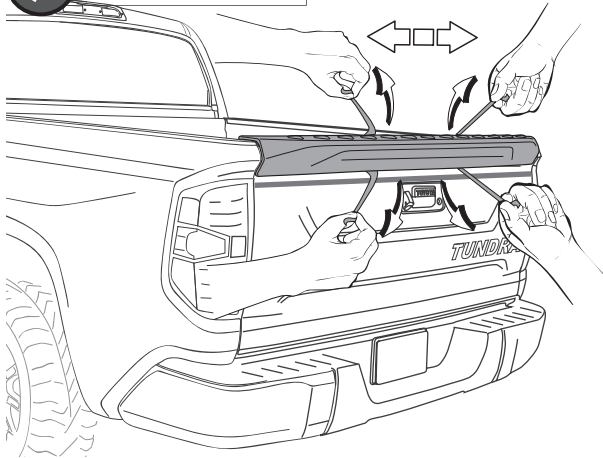


**!** WARM SURFACES WITH HEAT GUN IF SURFACE TEMPERATURE IS TOO COLD.

### 6 PLACE

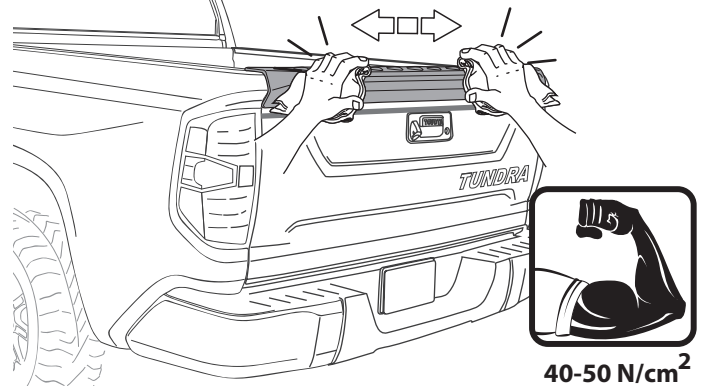


### 7 REMOVE LINER

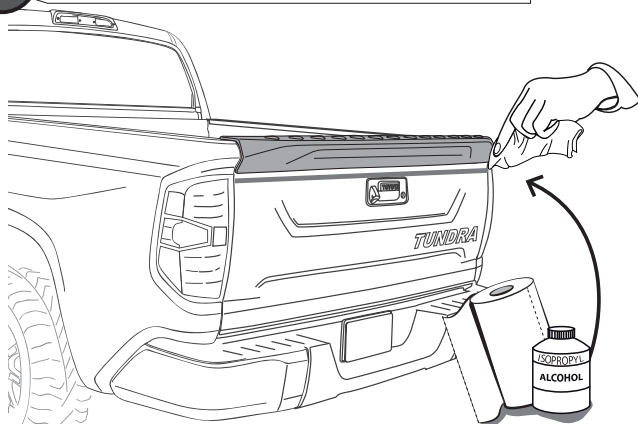


### 8 PRESS

**APPLY PRESSURE**



### 9 CLEAN OFF GREASE PENCIL MARK



### INSTALLED PART

